

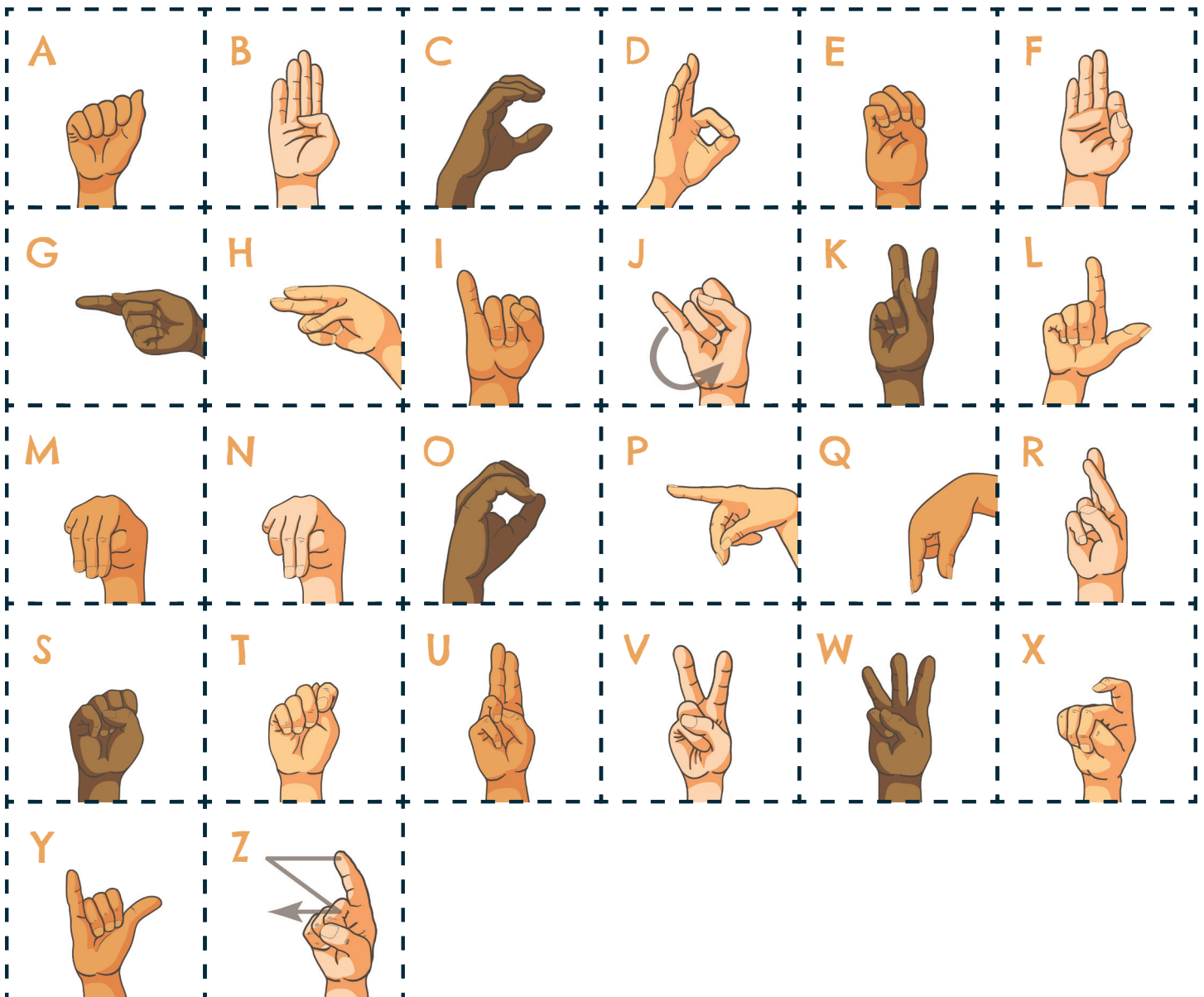
ASL ALPHABET BINGO FAMILY EDITION

INSTRUCTIONS

1. Print out the instruction sheet and a different game card for each player.
2. Cut out the alphabet squares below and place in a bowl.
3. The judge draws a square from the bowl and either calls out or signs the letter they drew.
4. Players look for that letter and place a cross or a marker over the matching letter on their game card. Remember: not all letters are used on each game card.
5. First player to get five letters across, down, or diagonally should call out or sign "BINGO!" That player wins!

TIPS

- print & cut a set of alphabet squares for each player to use as markers, or use something else.
- Laminate each game card to use over and over again!
- Purchase ASL Alphabet Flash Cards from Launch Mission Creative instead of using the alphabet squares. Purchase the ASL Alphabet Bingo Classroom Edition for more game cards!



ASL ALPHABET BINGO

Rules for the game:

1. Choose one person to be the judge. The judge will draw a card with a letter, and either call out that letter or sign it.
2. Participants place a marker on the signs the judge gives.
3. When you have five squares across, down, or diagonally, call or sign, "BINGO!"
First one to call it wins!!



ASL ALPHABET BINGO

Rules for the game:

1. Choose one person to be the judge. The judge will draw a card with a letter, and either call out that letter or sign it.
2. Participants place a marker on the signs the judge gives.
3. When you have five squares across, down, or diagonally, call or sign, "BINGO!"
First one to call it wins!!



ASL ALPHABET BINGO

Rules for the game:

1. Choose one person to be the judge. The judge will draw a card with a letter, and either call out that letter or sign it.
2. Participants place a marker on the signs the judge gives.
3. When you have five squares across, down, or diagonally, call or sign, "BINGO!"
First one to call it wins!!



ASL ALPHABET BINGO

Rules for the game:

1. Choose one person to be the judge. The judge will draw a card with a letter, and either call out that letter or sign it.
2. Participants place a marker on the signs the judge gives.
3. When you have five squares across, down, or diagonally, call or sign, "BINGO!"
First one to call it wins!!



ASL ALPHABET BINGO

Rules for the game:

1. Choose one person to be the judge. The judge will draw a card with a letter, and either call out that letter or sign it.
2. Participants place a marker on the signs the judge gives.
3. When you have five squares across, down, or diagonally, call or sign, "BINGO!"
First one to call it wins!!

